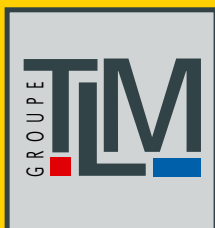


# Trafficline®

Interlocking PVC floor tile



Much **more**  
than a floor



## With Traficline® and Standline® Maintain and protect your industrial floors

- |              |                                 |                                       |
|--------------|---------------------------------|---------------------------------------|
| 1. Supple    | 4. Ergonomic                    | 7. Insulating (thermal & sound)       |
| 2. Durable   | 5. Ecological (100% recyclable) | 8. Versatile layout                   |
| 3. Anti-slip | 6. Aesthetic (& customisable)   | 9. Easy to install (and dis-assemble) |

*No adhesive required except when exposed to direct sunlight or in special conditions, no major noise or disruption to operational areas during installation.  
Contact our technical department.*



### Traficline®

**Solid tiles suitable for heavy duty applications with an exclusive interlocking attachment system**

- 5 finishes, 14 standard colours
- Long-term **Stainproof®** protection : TRAFICLINE tiles now benefit from a new and exclusive surface treatment, a world-wide innovation for easier maintenance
- Reproduction without size limit of your logo thanks to the exclusive **Visiofloor®** process : a second patented worldwide innovation to customise your floors

### Standline®

**Duckboard tiles suitable for heavy duty applications  
Allowing liquids, metal cuttings...drainage.**

- For high use floors and heavy plant traffic crossing, preventing dirt spreading into the building
- For perimeter areas around machines that eject oil, metal cutting... which could be dangerous for the machine operators and affect the cleanliness of the premises
- For areas where food is handled, industrial kitchens and premises that need to be cleaned by high pressure jets for sanitation

## AVAILABLE COLOURS for Traficline and Standline

 <b>Steel grey</b> STG - STR - STS - STA	 <b>Azur Blue (RAL 5009)</b> STG - STR - STS	 <b>Blue of France</b> STG - STS	 <b>Anthracite grey (RAL 7016)</b> STG - STR - STS - STA - Standline	 <b>Green (RAL 6028)</b> STG - STR - STS - STA - Standline
 <b>Yellow security (RAL 1003)</b> STG - STR - STS - STA - Standline	 <b>Black</b> STG - STR - STS - STA	 <b>Red (RAL 3020)</b> STG - STS	 <b>Ivory (RAL 1015)</b> STG - STR - STS	<b>Other RAL colours : minimum 500 sq. meter</b>



PSA Automobiles / Rennes

## Trafficline STG

® Stainproof

Finish	Fine grain
Dimensions	500 x 500 mm 4 tiles/sq.meter
Thickness	7 mm
Weight	2,20 kg/tile 8,80 kg/sq.meter
Surface aspect	Satin
Access ramps Access corners	500x160 mm - 0,7 kg 160x160 mm - 0,2 kg



CAT L'Ambresis / Villeparisis

## Trafficline STS

® Stainproof

Finish	Rice grain - Fine structure
Dimensions	500 x 500 mm 4 tiles/sq.meter
Thickness	7 mm
Weight	2,20 kg/tile 8,80 kg/sq.meter
Surface aspect	Brilliant satin
Access ramps Access corners	500x160 mm - 0,7 kg 160x160 mm - 0,2 kg



Centre SCANIA / Angers

## Trafficline STA

® Stainproof

Finish	Fine grain - Big structure
Dimensions	500 x 500 mm 4 tiles/sq.meter
Thickness	7 mm
Weight	2,20 kg/tile 8,80 kg/sq.meter
Surface aspect	Brilliant satin
Access ramps Access corners	500x160 mm - 0,7 kg 160x160 mm - 0,2 kg



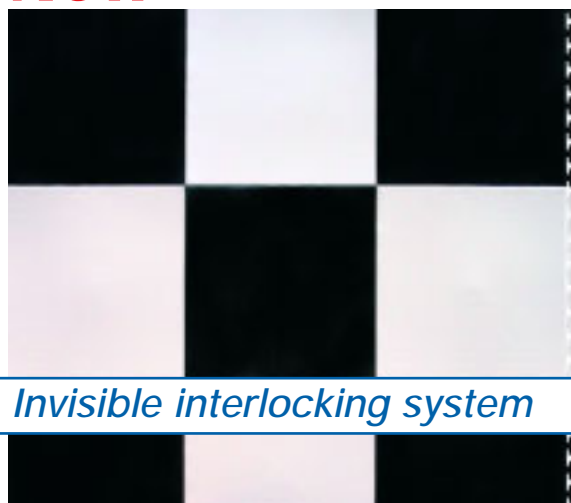


## An « asset » for your commercial floors

For interior surfaces (new or for covering old floors) :

- **Lockit®** (new), a technical and aesthetic asset
- **Trafficline® STG 5**, the 9 benefits of our industrial floor at a lower price

**New**



*Invisible interlocking system*



## Lockit®

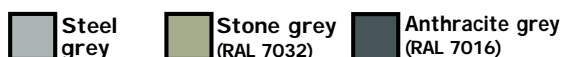


- Invisible interlocking system
- Looks like ceramic, without the disadvantages (weight, installation, price)
- Improved floor locking makes cleaning easier
- Customised tiles thanks to the Visiofloor process

Finish	very fine grain
Dimensions	333 x 333 mm 9 tiles/m <sup>2</sup>
Thickness	7 mm
Weight :	0,90 kg per tile 8,10 kg/sq.meter
Surface aspect	Satin



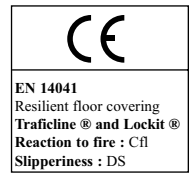
*All the benefits of our industrial  
floor at a lower price*



## Trafficline® STG 5

- For interior surfaces (new or covering old floors) of commercial premises having a middle to high foot traffic : public building, schools, kindergartens, senior citizens buildings, boutiques, shops, offices, conference rooms, entrance halls, corridors, waiting rooms...

Finish	fine grain
Dimensions	500 x 500 mm 4 tiles/sq.meter
Thickness	5 mm
Weight	1,70 kg per tile 6,80 kg/sq.meter
Surface aspect	Satin
Access ramps	500x160 mm - 0,5 kg
Access corners	160x160 mm - 0,2 kg



## CONFORMITY TO CE STANDARD

Traficline® and Lockit® correspond to the CE marking criteria expected for PVC floor coverings (EN 14041)



## A 100% RECYCLABLE PRODUCT

Contact our environmental department for details on conditions of taking back old Traficline® tiles

## OPTIONS ON REQUEST

### ■ Antistatic tiles

Test report from LCIE (Central Laboratory for Electrical Industries), according to NFP 62-001 standard on request

### ■ Tiles for application in coolers and freezers

Flexible and wear resistant down to -20°C

## CSTB performance classification

Technical characteristics	Standard	Units of measurement	Traficline®	Standline®
Hardness	ISO 868	Shore A	91,7	91,9
Abrasion	NF EN 660-1	mm	0,10 soit 1,5 % of the thickness	0,10 soit 0,7 % of the thickness
Resistance to compression	NFP 15 451 CSTB	kg/cm2	516	344
Toughness (resistance to pull) - for 1% elongation - for 2% elongation	MI UEAtc	Kg/m	836 1378,5	287,1 470,9
Elongation before rupture	NF T 46 002	%	126,8	110,6
Force to rupture	NF T 46 002	ton/m	1376	1172
Dimensional stability	NF EN 434	%	0,34	0,35
Bending to heat - Initial - Final	NF EN 434	mm	0,2 0,8	0,2 0,9
Standard indentation - under load - remanent	NF EN 433	mm	0,10 0,01	1,48 0,08
Intense indentation - under load - remanent	NF EN 433	mm	0,17 0,07	2,08 0,24
Resistance to natural light through a window	NF EN 20105-B02	Scale 1 to 5 where 5 is the most resistant	5 (no damage)	5 (no damage)
Flow testing (output 1800 l/h) - no incline - incline of 1%	CSTB	Saturation time in seconds		40 85
Chemical resistance - common acids, common bases, oils, gas-oil - Solvents	CSTB 2954		No deterioration Not resistant to prolonged contact	No deterioration Not resistant to prolonged contact
U.V. stability			Good*	Good*
Inflammability	EN 13501-1		Cfl-s2 Hardly Inflammable	Hardly Inflammable
Slip test. Coefficient of dynamic friction	EN 13893 EN 14041		0,75 Class DS	
Usage classification	EN 685		Class 34-43	

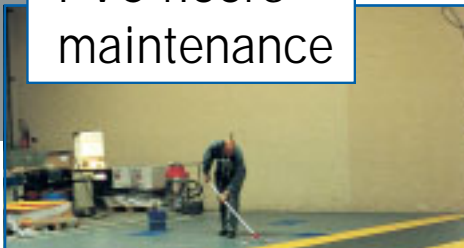
\* CSTB test report on request

## Installation



- The floor must be firm and flat so the tiles are not deformed when laid (contact our technical department if necessary)
- A chalk-line is drawn parallel with one of the walls, taking into consideration the dimensions of any access ramps due to an opening and the tiles are laid from that line. A gap of 0.5 cm should be left around the edges of rooms or any other fixed obstacles
- The tiles can be easily cut to the required measurements with a sharp fixed blade knife or with a jigsaw for more difficult cuts.

## PVC floors maintenance



- **Recommendations for the maintenance of your PVC flooring :**
  - Automatic scrubber drier with rotary PVC brush and vacuum suction
  - Our Cleanline detergent with a variable dilution (3 to 5%) depending on the state of the floor
- **Recommendations for more resistant stains (tyre marks, oil, grease...) :**  
Our Superclean stain remover

**Trafficline**  
 ® Visiofloor  
 PATENTED PRINTING PROCESS



Let your floor  
 do the talking

Customised digital printing sealed by UV drying

An exceptional and unique form of communication

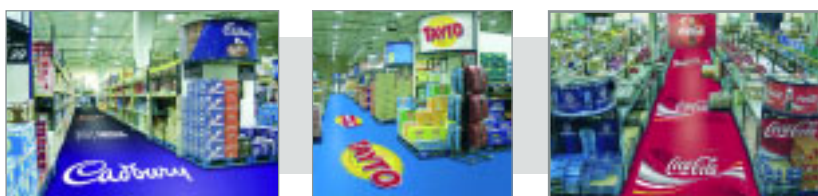
Patented

No limit to size

Exclusive stain resistant protection system

Exact reproduction of any type of logo, pattern, photo... (Quote on request)

An exclusive process  
 A world-wide innovation



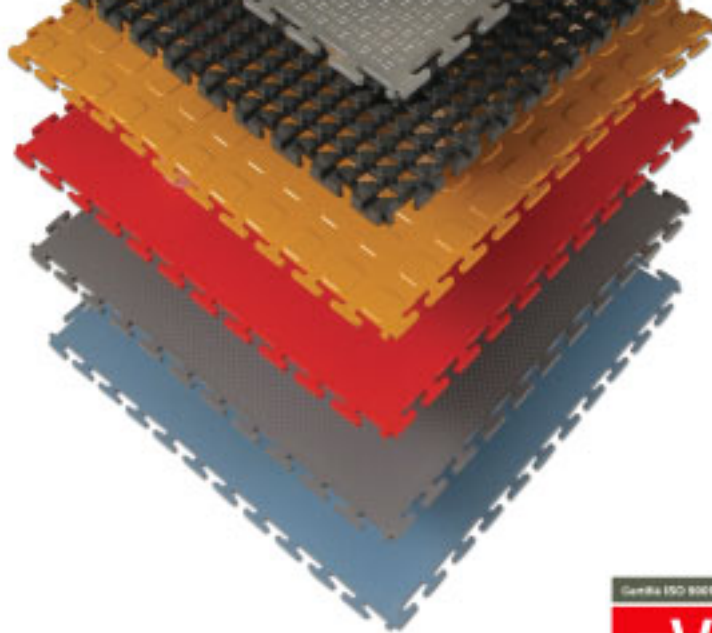
■ Printing on request from 3 sq.m



■ Choice of decorative patterns: pebbles, wood, grass...



■ Zone demarcation, warning signs, pictograms: available per unit



## Industrial floor references

AÉROSPATIALE MATRA ■ AÉROSPATIALE DE SAINT-NAZAIRE ■ AIA ■ AIRBUS ■  
 ALCAN ■ ALCON ■ ALSTOM ■ ARENA INTERNATIONAL ■ AREVA ■ ATLANTIC  
 INDUSTRIE ■ AUCHAN ■ AUDAX ■ AVON ■ BASES INTERMARCHÉ ■ BEGHIN SAY ■  
 BERTRAND FAURE ■ BILLION ■ BOSCH ■ BRITISH AIRWAYS ■ BSN ■ CARMETAL  
 /AIXAM ■ CARREFOUR ■ CATERPILLAR ■ CHOQUENET ■ CHU GRENOBLE ET  
 CHERBOURG ■ CITÉ DES CONGRÈS DE NANTES ■ CLERGERIE ■ CONFISERIE  
 THERMALE VICHY ■ CONTINENTAL PNEUS ■ CORRÈZE CONSERVES ■ CRISTALLERIE  
 DE BACCARAT ■ DANONE ■ DECATHLON ■ DGA ■ DUNLOP/GOODYEAR ■ ÉCOLE  
 NORMALE ■ EDF ■ FAURECIA ■ FENWICK ■ FRANCE TELECOM ■ FRANCEVAL ■  
 FROMAGERIE BEL ■ FROMAGERIE D'ORVAL ■ GDF ■ GIAT ■ GUY DEGRENNE ■  
 HARIBO ■ HENKEL ■ HEUDEBERT ■ HEULIEZ ■ HOUEL ■ IER ■ IMPRIMERIE  
 NATIONALE ■ INSTITUT GÉOGRAPHIQUE ■ INTERMARCHÉ ■ ISTRAL ■ JALATTE ■  
 KRONENBOURG ■ LABORATOIRE DEL'ACCÉLÉRATEUR LINÉAIRE ■ LAITERIE VAL  
 D'ANCENIS ■ LEGRAND ■ LEROY SOMER ■ LINDAL FRANCE ■ MAIRIE DE PARIS ■  
 MBK ■ MERLIN GERIN ■ MESSIER BUGATTI ■ MICHELIN ■ MIDAS ■ MINISTÈRE  
 DELADÉFENSE ■ OBI ■ PAMPRYL ■ PARC EXPOSITIONS BORDEAUX ■  
 PEUGEOTCITROËN AUTOMOBILES ■ RATP ■ RENAULT ■ RENAULT AGRICULTURE ■  
 RHÔNEPOULENC ■ RIVOIRE ET CARRET LUSTUCRU ■ ROYAL CANIN ■ SAFT ■  
 SAGEM ■ SANOFI BEAUTÉ ■ SAPRR ■ SCANIA ■ SEITA ■ SERVIR ■ S MURFIT ■ SNCF  
 ■ SOLVAY ■ SOMMER ALLIBERT ■ STADE DE MONACO ■ SYNTHELABO ■ TOYOTA  
 ■ VALEO ■ VALLOUREC ■ VENDÉE PLASTIQUE ■ VOLVO ■ VUITTON ■ WESTFALIA ■  
 WIRQUIN PLASTIQUES ■ YAMAHA ■ JAQUAR ■ JCB ■ VODAFONE ■ WAITROSE ■  
 SAINSBURY'S ■ NHS SUPPLY CHAIN

Consult our site

[www.traficline.com](http://www.traficline.com)

COMMERCE  
**angelwings**  
 TRADING INC

Angel Wings Trading Inc.  
 369 Poplar drive, Oakville, ON L6J 4E3  
 Tel: 1-888-920-0615 Fax: 905-849-6097  
[info@angel-wings.ca](mailto:info@angel-wings.ca)  
[www.angel-wings.ca](http://www.angel-wings.ca)