

Everything you need to transform your garage from a frustrating “dumping ground” into a tidy and useful room

DURA™

Fitted Garage & Workshop Systems

If you are looking for more storage space and an extra room within your home why not look into your garage?

With Dura’s unique Fitted Garage™ system you can at last find a secure and tidy home for expensive tools, gardening and leisure equipment. Free up enough space to use your garage as a gym, safe playing area or even park the car!



Products designed especially for the tough garage environment

The Dura system comprises a wide range of modular cabinets, workbenches, accessories and flooring, which are designed to withstand the tough garage environment and tailored to meet your exact needs.



- More space ✓
- No clutter ✓
- More security ✓
- Without building! ✓



Tidy • Practical • Secure • Stunning



The Fitted Garage™ System

Secure: Hazardous liquids away from children



600 series base cabinet with strong double-skinned doors

Increase security: Lock away expensive tools



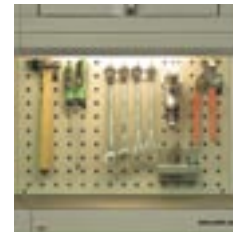
Foam lined tool cabinets available with 3, 5 or 7 drawers

Organise: Items always easily accessible



Louvre panels for supporting storage bins or aerosol shelves

Create: Handy well-lit spaces for work tools



Peg panels and under-cabinet lighting for tidy work areas

Increase hanging space: Avoid trip hazards



Louvre rail with spigots for hanging bulky equipment



Designed and manufactured in the UK



Everything for efficient storage...

Dura Fitted Garage™ cabinets are available in **three modular sizes of 600mm (23 5/8"), 900mm (35 3/8") and 1200mm (47 1/4")**.

Each size has a range of configurations so you can choose the combination that best meets your requirements, with the confidence that the result will be co-ordinated and attractive.

All Dura cabinets are built from heavy gauge 1.2mm (0.047") steel using the latest CAD/CAM precision technology. They are coated with an attractive metallic silver, epoxy-polyester paint that is 'stoved-on' for a stunning and durable finish.

Dura cabinets also carry our **5 year guarantee***.



*Subject to terms and conditions. Please ask for further details.

Tidy • Practical • Secure • Stunning

Store: Bulky equipment off the floor



Spacious flexible shelving (doors optional)



Multi-purpose 2 metre (6' 6 3/4") high tall cabinet with adjustable shelving

Maximise: Useable high-level space



1200mm (47 1/4") wall cabinet with vertical door and shelf



600mm (23 5/8") wall cabinet with hinged doors and shelf

Select: Adjustable feet or castors



Choice of adjustable feet to overcome uneven floors



... or lockable castors for easy re-configuring of your space

Invest in one system: Stay co-ordinated

- Workbenches
 - Wall mounted folding benches
 - Wall towel dispensers
 - Integrated wastebins
 - Integrated wash basin
 - Stainless steel worktops
 - Coat rails
 - Drawer divider inserts
 - Hanging hooks
- and much more!*

Drawers are foam-lined as standard and run on a series of roller bearings to give smooth reliable service, even under extreme loads.

The Fitted Garage™ system includes a wide range of accessories to maximise the storage capacity and flexibility of your space. Louvre panels and rails provide convenient hanging space for frequently used tools and storage bins to contain nails and other fixings.

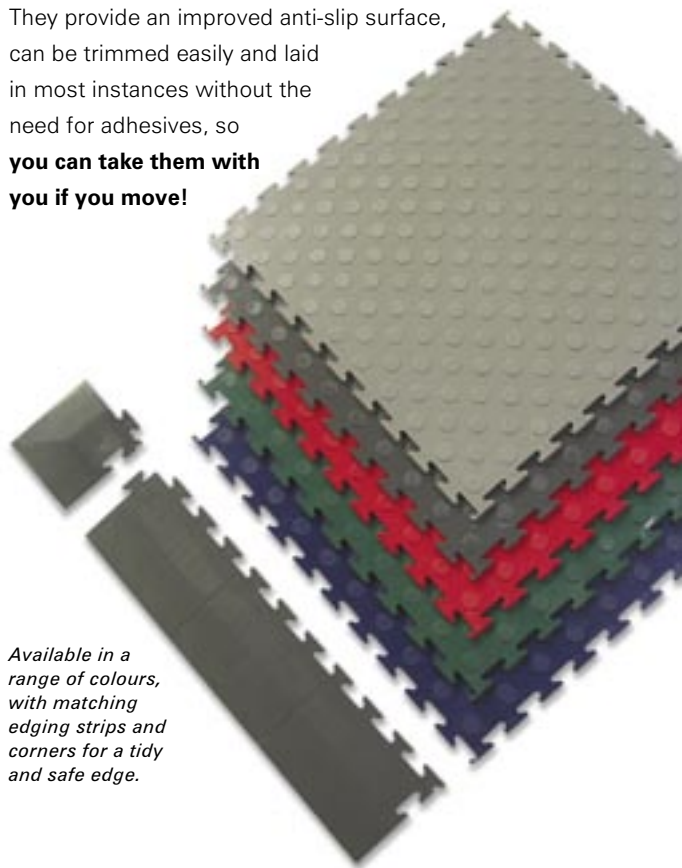
Under-cabinet lighting can be fitted to wall cabinets to provide a comfortable working area without glare.

A garage floor to be proud of

Dura interlocking PVC floor tiles look superb and provide an **excellent thermal and dust barrier**.

Available in a range of colours, each tile weighs over 2 kg (4.4 lbs.), is approx 7mm (9/32") thick and easily cleaned to maintain a pristine appearance.

They provide an improved anti-slip surface, can be trimmed easily and laid in most instances without the need for adhesives, so **you can take them with you if you move!**

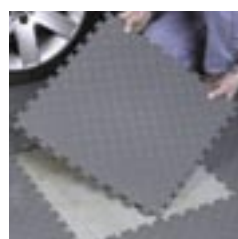


Available in a range of colours, with matching edging strips and corners for a tidy and safe edge.

Resolve untidy floors: Poor floor surfaces concealed with easily laid floor tiles



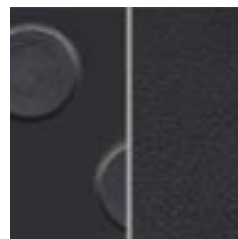
PVC interlocking tiles 500mm x 500mm (19 5/8" x 19 5/8")



Easily laid without the need for adhesive



Tiles weigh over 2kg (4.4 lbs.) each and are 7mm (9/32") thick



A choice of studded or leather grain finish



Transform your garage!

Realise the potential of your garage
with a unique range of quality cabinets
and products to transform it into a
really useful space to be proud of!



Tidy • Practical • Secure • Stunning

Choose from one of our popular combinations, design your own, or ask us to design a layout unique to you.



Whatever the size of your garage or your budget, we have a configuration to suit you!

TOLL FREE
1 888 920 0615

COMMERCE
angelwings
TRADING INC

Angel Wings Trading Inc.
4008 Steinberg
Ville St.Laurent, Quebec
Canada H4R 2Y7

tel +(514) 920 0615
fax +(514) 920 0745
Toll Free 1 888 920 0615

email info@angel-wings.ca
web www.angel-wings.ca

Drawing from years of experience supplying equipment to the luxury car market, Dura offer a design & planning service as well as a competitively priced professional installation package to help your dream garage become a reality



Planning your Fitted Garage™

Our dedicated team can manage the design of your Fitted Garage™ from start to finish – advising on how to maximise your space and selecting the right combination of products from our award winning system to suit your requirements. Alternatively, you can choose one of our popular combinations or design your own configuration from our extensive range.

Award for 'outstanding design' BIDA - the British Interior Design Association

Delivery and installation services

Our streamlined ordering service ensures cabinets arrive quickly and ready assembled, requiring only the fitting of adjustable feet prior to installation. Open shelves, workbenches and trolleys arrive flat-packed with full instructions for simple assembly.

Many customers use our competitively priced professional installation service - where you can relax and let our experienced fitters take the strain.



Dura - The professional's choice

By selecting Dura cabinets for your garage, you are following in the footsteps of well-known names from the worlds of motorsport, luxury cars and motorcycles, who have all specified our products for their workshops, including **Aston Martin Lagonda**, **Harley-Davidson UK** and **Foggy Petronas Racing**.



DURA™
Fitted Garage & Workshop Systems

Tidy • Practical • Secure • Stunning

childrens' bikes *cycle helmets* table tennis bats *folding table*
skateboard *window varnish* watering can *cardboard boxes*
dismantled swing *trimmer* spade *rotary* washing line shears
extension cable folding chairs *wellington boots* picnic hamper
fishing rods car cycle carrier *dartboard* electric mower *trowel*
hedge trimmer *angle grinder* garden sunbed *tent* foot pump
hose reel daffodil bulbs *empty plant pots* stepladder *pruners*
vacuum cleaner *spare guttering* slug pellets *paddling pool*
sunbed *child's slide* football *golf clubs and bag* practice net
inflatable castle bucket *pressure washer* gloss paint *broom*
car blanket *torch* patio cleaner *window putty* seed trays *rake*
some more empty plant pots *punchbag* cordless drill *bird feed*
power jigsaw *engine oil* radio-controlled car *cat litter* heatgun
window cleaner lightbulbs *rotary sander* folding workbench
trampoline workout mat *rucksack* umbrella *golf trolley* seeds
bags of cement fishing tackle box *boxing gloves* floor mop
rowing machine *paint kettle* ant powder *car sponge* secateurs
shopping basket garden fork *disinfectant* tins of pet food
bags of sand lawn fertiliser *snooker table* car polish *birdtable*
tennis balls *an old sporting trophy* bags of gravel *cricket*
bat and stumps car leather *upholstery cleaner* toolbox *nails*
wallpaper paste *emulsion paint* fire extinguisher *sandpaper*
a coffee jar full of screws *scooter* fence paint *patio chairs*
barbeque

Need more space?

bug spray
plastic skittles *12pc screwdriver set* water sprinkler *camp bed*
cooler box *tennis rackets* treadmill *dumbells* ground sheet
alloy wheel cleaner yet more empty plant pots *rusty chisels*
garden lamp *ball of string* anti-freeze *roller blind* fishing net
bamboo canes snow shovel *garden gnome* carpet underlay
a socket set spare door handles *dustpan and brush* bin bags
bicycle stabilisers white spirit *golf balls* mallet *shelf brackets*
chest freezer *kite* roller skates *tins* but no room for the car!